



New Bedford South End Fixed-Route System Redesign

Southeastern Regional Transit Authority

Joe Poirier

3/15/22



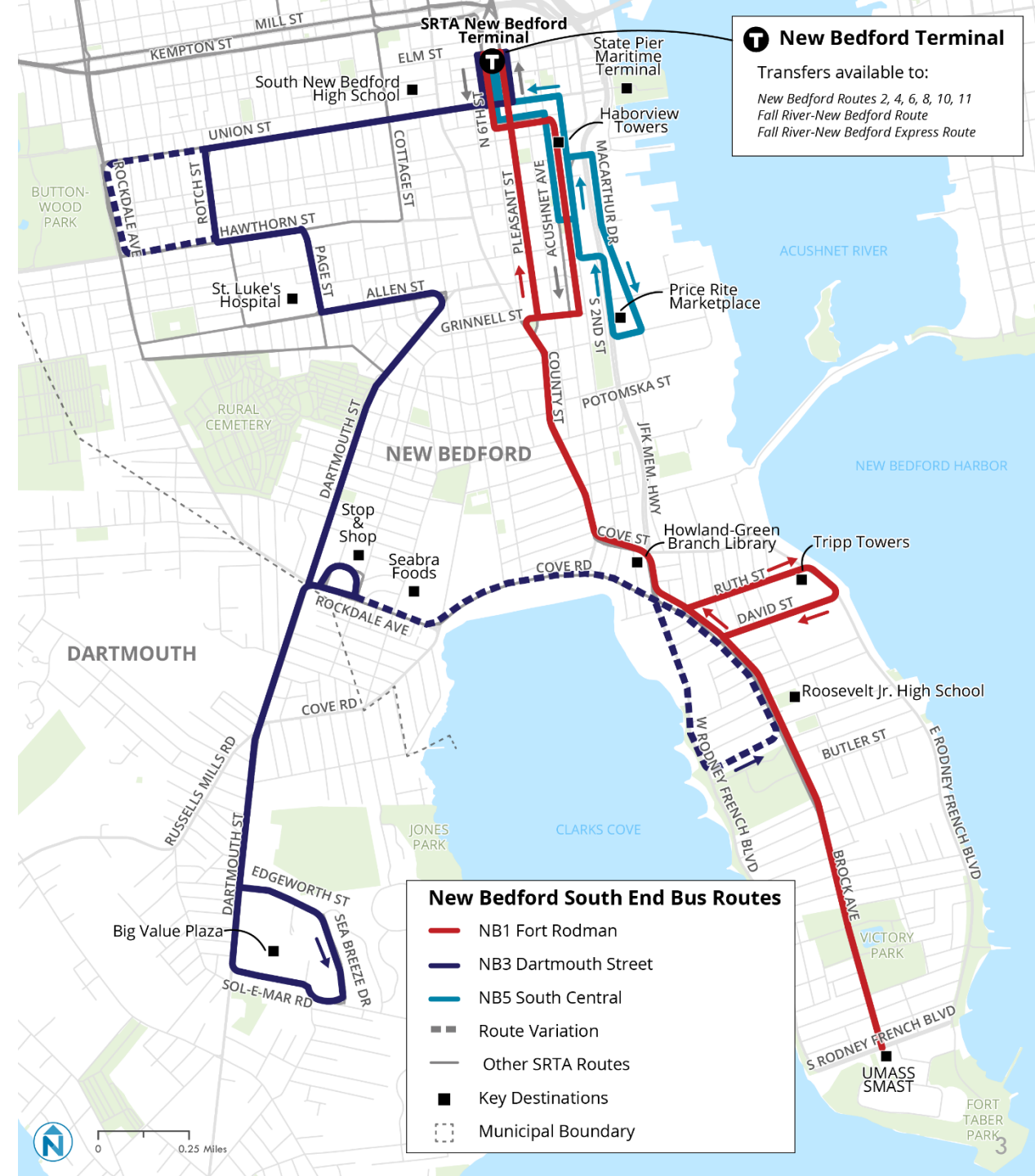


Agenda

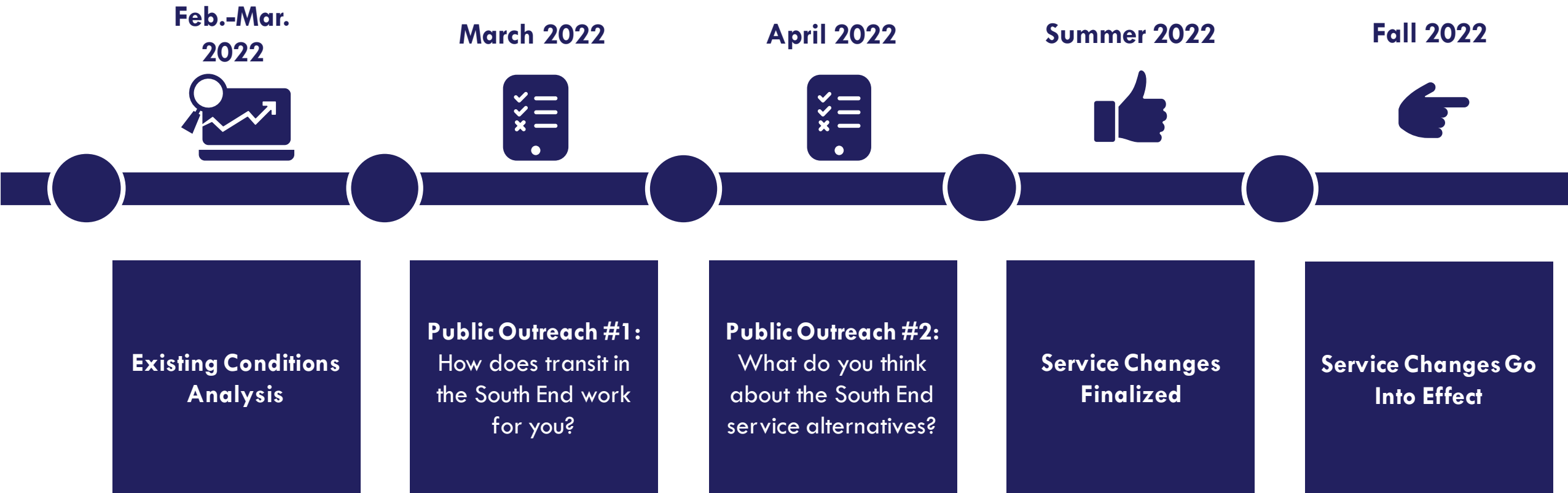
- 1 Project introduction
- 2 Project timeline
- 3 Existing conditions
- 4 COVID-19 impacts
- 5 The South End routes
- 6 How to stay involved

Project introduction

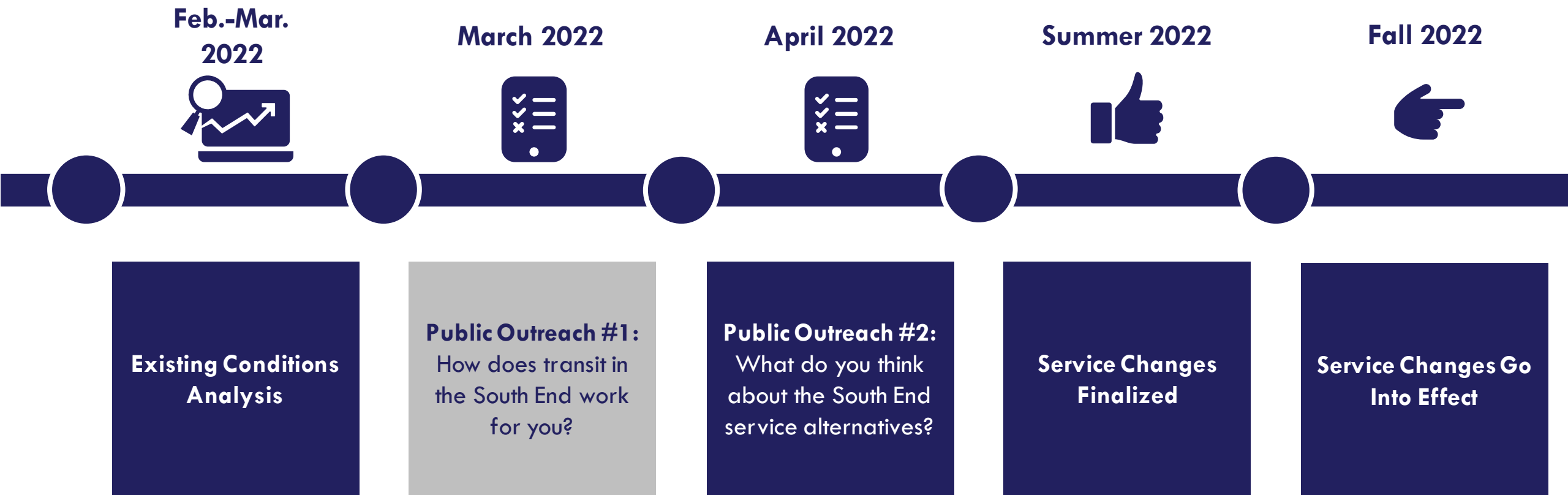
- What is this project about?
 - Redesign New Bedford South End service
 - Routes 1, 3, and 5
- What are the goals?
 - Increase the amount of people riding the bus by providing more mobility and better access to major destinations
 - Improve operations on select corridors
 - Better utilize SRTA's limited resources



Project timeline

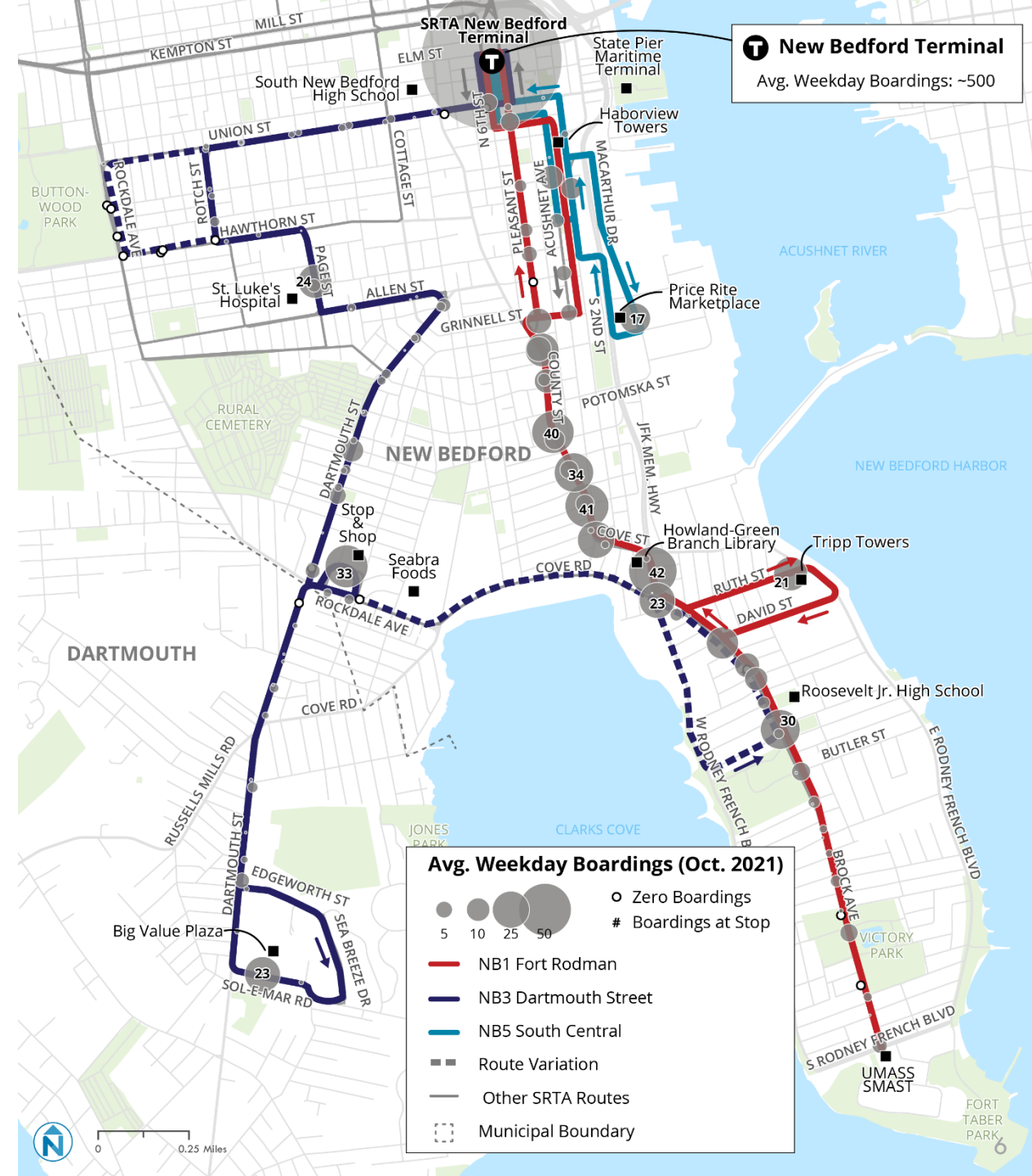


Project timeline



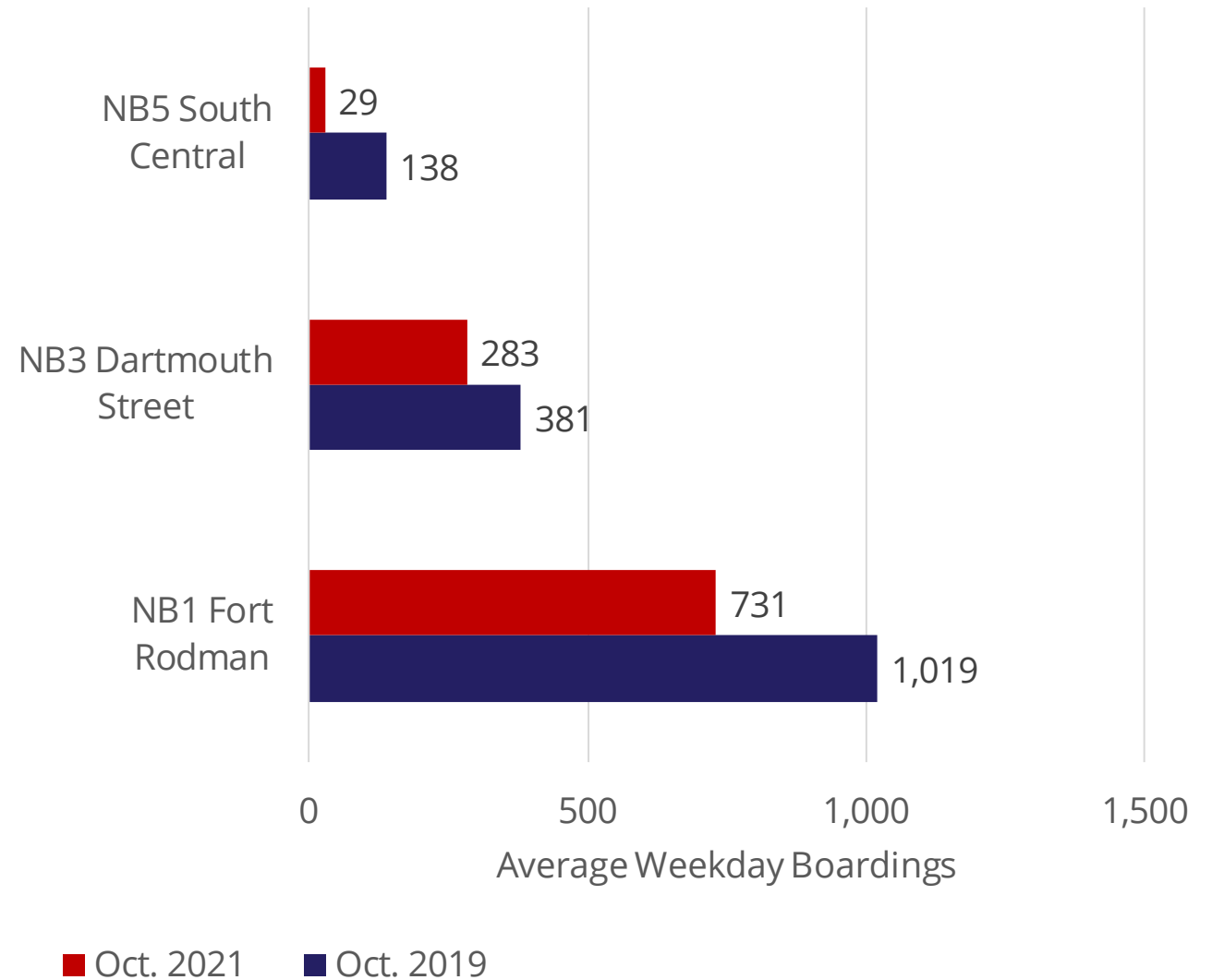
Existing conditions

- Route NB1 carries the most riders
- Route NB5 carries very few riders
- Highest-ridership stops are
 - SRTA New Bedford Terminal
 - Howland-Green Branch Library
 - Stop & Shop
 - Roosevelt Jr. high School
 - County Street
 - Tripp Towers
 - Big Value Plaza
 - St. Luke's Hospital
 - Price Rite Marketplace



COVID-19 impacts

- Ridership on all routes declined during COVID-19 pandemic
- Route NB5 ridership declined by 80%



Route NB1 Fort Rodman

- Loop to serve Tripp Towers
- Turns around at UMass SMAST
- Operates on different streets inbound and outbound near New Bedford Terminal



Route NB3 Dartmouth Street

- Relatively indirect service between New Bedford Terminal and St. Luke's Hospital
- Loop to serve Stop & Shop and Big Value Plaza
- Night service makes trip to and from New Bedford Terminal longer



Route NB5 South Central

- Large figure-eight
- Serves:
 - Price Rite Marketplace
 - Boa Vista Towers
 - Harborview Towers



How to stay involved

- Visit the project website
 - www.srtabus.com/NBSE
- Attend the next public meeting
- Take the survey
 - www.surveymonkey.com/r/srta4



New Bedford South End Redesign Rider Survey

About this survey

SRTA wants your ideas about how transit can be improved in New Bedford's South End. Your responses will help shape recommendations for changes to bus routes that serve the South End (NB1, NB3, and NB5). Please help SRTA improve its New Bedford South End routes by taking the survey below.

OK

NEXT

Thank you

Joe Poirier

jpoirier@nelsonnygaard.com